



Creating balance in healthcare



# Elexo Shower-toilet chair



5100 5500

# Elexo Shower-toilet chair



5100 5500

## Elexo Shower-toilet chair with removable footrests

Caring for clients with traditional shower-toilet chairs is heavy work. The caregiver is obliged to work in unnatural postures and suffer from static back strain. Lopital offers relief with the height-adjustable Elexo shower-toilet chair.

The Elexo provides comfort and security for both carers and clients. Its flexible height reduces back strain suffered by carers to a minimum, which allows the Elexo to make an important contribution to the healthcare sector health and safety policy.

The electric height-adjustability ensures that the seat reaches a maximum tilting angle of 20 degrees when at its maximum height, thereby creating the optimum seating balance for the client.

- Maximum load 180 kg / 400 lbs.
- Tilt setting from 0 to 20 degrees.
- Simple electric high / low adjustment.
- Handcontrol with battery indicator.
- With sleep mode setting after 60 minutes.
- Upholstered seat with toilet opening and inlay.
- Foldable upholstered armrests with front locking.
- Ergonomically formed seat and backrest.
- Foldable and removable footrests with calf protection.
- Rail for toilet bucket or bedpan.
- 4 plastic castors, fitted with brakes.
- Extremely stable due to the fitting of 2 lifting motors.

### Options

- Product no. 6830 5650 Straight armrests.
- Product no. 6840 5661 Dual locking armrests.
- Product no. 6840 5500 Adjustable head / neck support.
- Product no. 6950 1104 Plastic bedpan and lid.
- Product no. 6950 1120 Safety belt.
- Product no. 6950 5624 Platilon backrest.
- Product no. 6950 5625 Platilon seat.
- Product no. 6960 8026 Adjustable comfort leg supports.
- Product no. 6975 8045 Four point safety belt.
- Product no. 7556 0025 Directional wheel left front.





Suitable for people with a mild to severe disability



*Ergonomically formed seat with inlay.*



**Option:** Product no. 6960 8026  
*Adjustable comfort leg supports.*



**Option:** Product no. 6950 1104  
*Plastic bedpan and lid.*



*Independent, foldable upholstered armrests with front lock.*



*Hand control with battery indicator.*



*Charging point with magnetic coupling.*



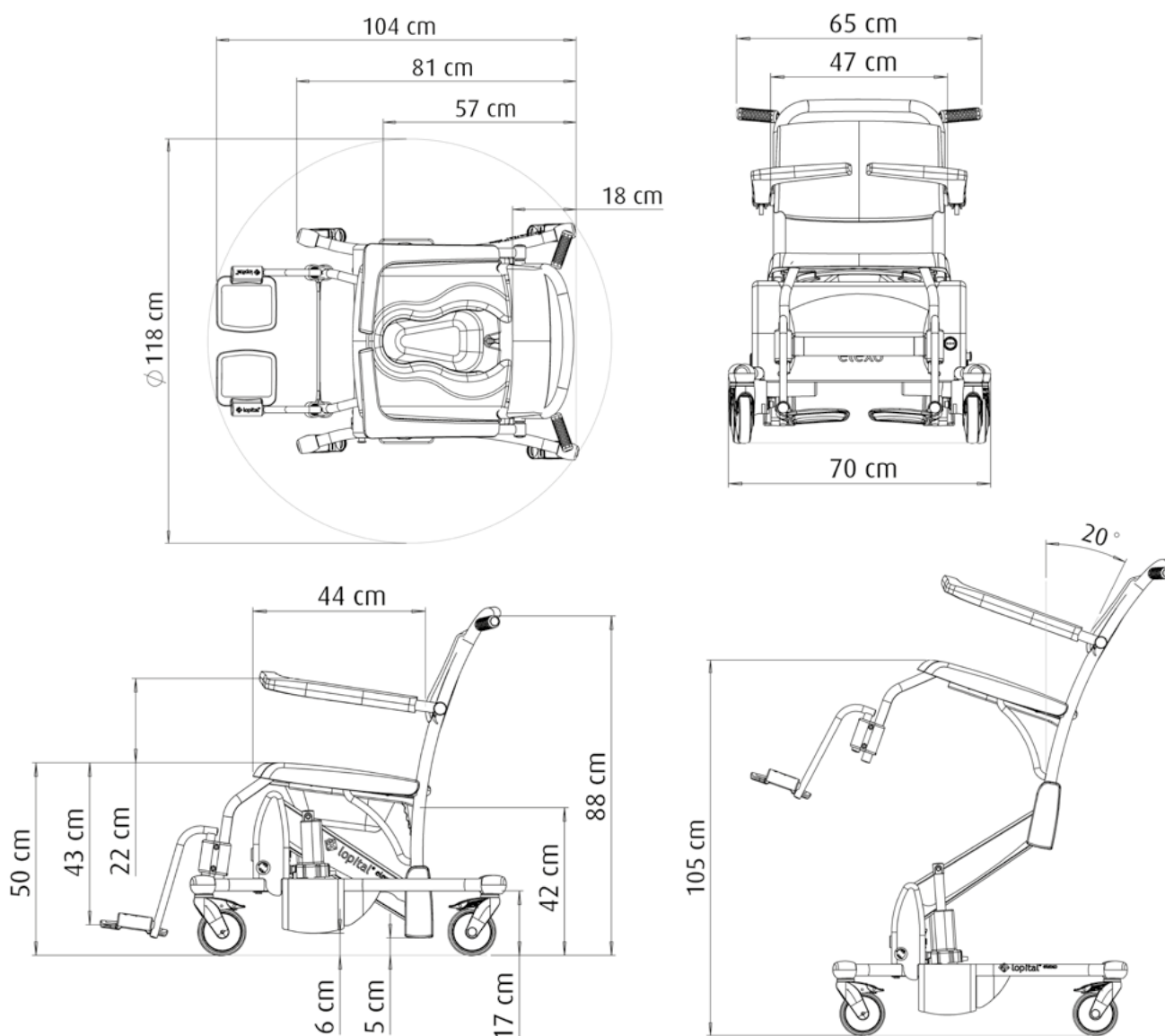
*Seat height in lowest position 50 cm.*



*Tilt setting to 20 degrees.*

## Technical specifications

- |                            |                                     |                           |                    |
|----------------------------|-------------------------------------|---------------------------|--------------------|
| • Max. load                | 180 kg / 400 lbs                    | • Total length base frame | 104 cm / 40.9 inch |
| • Product weight           | 47 kg / 103.6 lbs                   | • Total width base frame  | 70 cm / 27.6 inch  |
| • Seat width               | 47 cm / 18.5 inch                   | • Turning radius          | 118 cm / 46.5      |
| • Seat depth               | 44 cm / 17.3 inch                   | • Electrical power        | 24V                |
| • Seat height (adjustable) | 50 to 105 cm /<br>19.7 to 41.3 inch | • Battery capacity        | 7Ah                |
| • Tilt setting             | 0 to 20 degrees                     | • Charger                 | 220V 50/60Hz 500mA |
|                            |                                     | • Waterproofness          | IPX4               |



For more information, visit our website: [www.lopital.com](http://www.lopital.com)

Lopital Nederland B.V., Laarakkerweg 9, 5061 JR Oisterwijk, Postbus 56, 5060 AB Oisterwijk  
 Tel +31 (0)13 5239300, Fax +31 (0)13 5239301, E-mail [info@lopital.nl](mailto:info@lopital.nl), [www.lopital.nl](http://www.lopital.nl)

